



# BNsens PRESSURE GAUGE YBH



**BNsens**

## DESCRIPTION

The product is made of stainless steel structure, which is used for measuring slightly corrosive gas or liquid media and places where the surrounding environment is also very corrosive.

Product implementation standard :JB/T6804-2006

## CHARACTERISTICS

- Diaphragm chemical seal
- Dual range dial
- Instrument filling liquid (glycerin, glycerin aqueous solution, silicone oil, fluorine oil, etc.)
- Heat sink (can accommodate higher media temperatures)
- Pointer type up and down limit device
- Standard explosion-proof pressure relief hole on the back

## PREFORMANCE

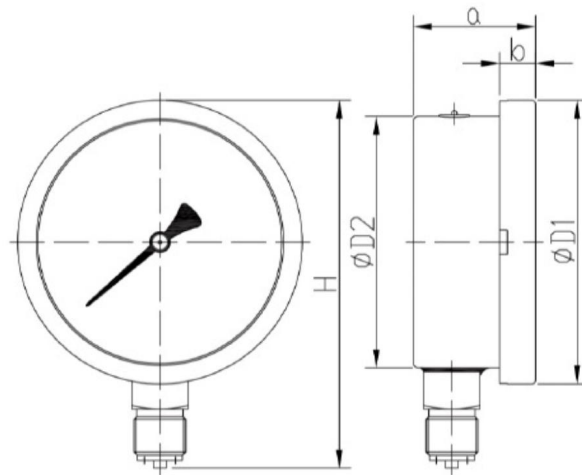
Parameter	YBH
Nominal diameter	100, 150, 200, 250
Accuracy	1.0%, 1.6%, 2.5% , can be customized
Measuring range	40~ 60 : -0.1~0~0.1... 60MPa 100~ 250: -0.1-0~0.06... 250MPa Or other equivalent pressure vacuum range
Overload pressure	Full scale * 130%
environment temperature	-40 ~70
Medium temperature	-40 ~100
	When the ambient temperature deviates from 20 ± 5 , the indication error of the instrument is not more than 0.04%/
Process connection	40~ 60: M14X1.5(other optional) 100~ 250: M20X1.5(other optional)
Pressure sensing element	<10MPa Type C tube 10MPa Spiral pipe
Liquid material	316L(Monel optional)
Case material	304SS(316L optional)
Instrument glass	40~ 100 polycarbonate (except 60) Other flat glass (optional safety glass)
Class of protection	IP54, IP65, and IP66

## APPLICATIONS

- Mainly used in petroleum, chemical industry, metallurgy, electric power, food, medicine, environmental protection, machinery and other industries.

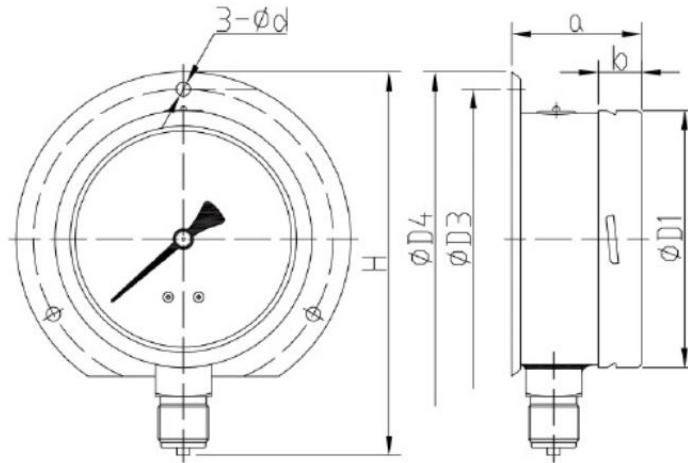
# DIMENSIONS

100, 150 outside card radial



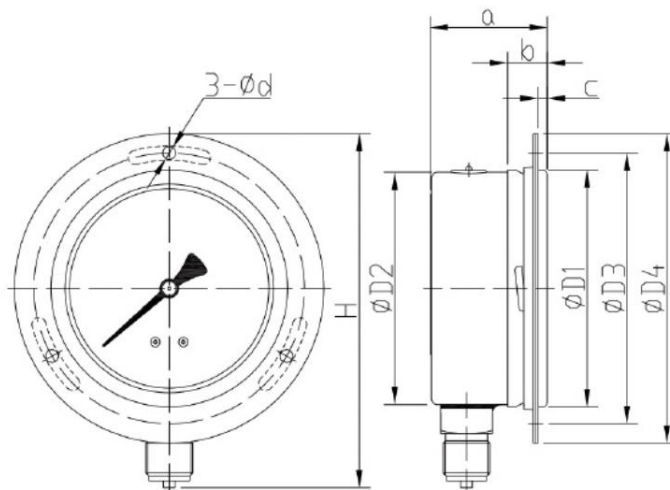
Size (mm) Diameter (mm)	D1	D2	a	b	H
100	110.5	100	47.5	14	143.5
150	160	148	48	15	194.5

100, 150 Inside card type radial rear



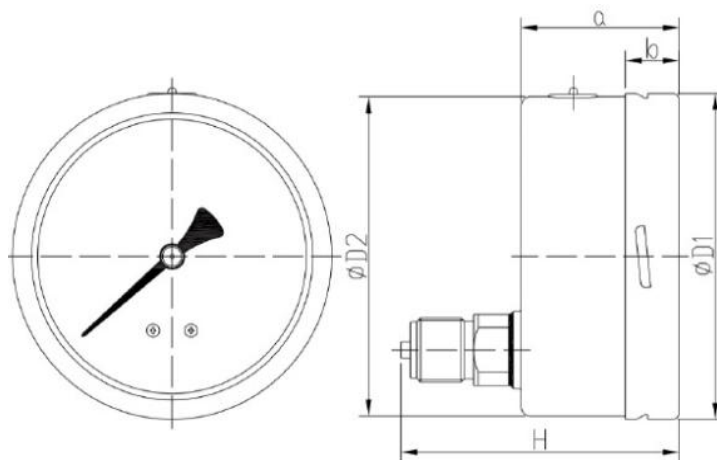
Size (mm) Diameter (mm)	D1	D2	D3	D4	d	a	b	H
100	101	99	118	132	5.5	51	17	151
150	150	147	165	180	5.8	50.5	18	208

100, 150 Inside card type radial front



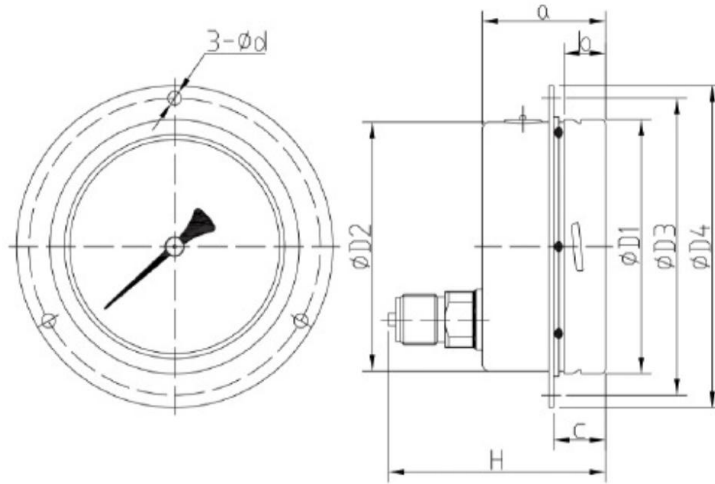
Size (mm) Diameter (mm)	D1	D2	D3	D4	d	a	b	C	H
100	101	99	115.5	132	5.5	50	17	5	151
150	150	147	165	180	5.8	50.5	18	5	208

100, 150 Inside type down axis



Size (mm) Diameter (mm)	D1	D2	a	b	H
100	101	99	50	17	88
150	150	147	50.5	18	88

100, 150 Inner card type lower axial center side



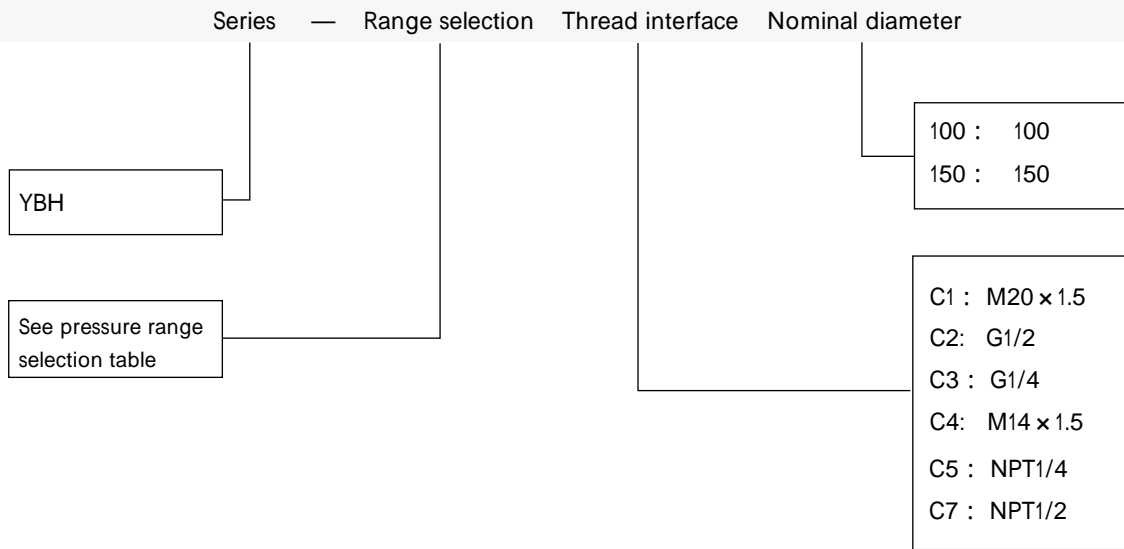
Size (mm)	D1	D2	D3	D4	d	a	b	C	H
100	101	99	118	128	5.5	50	17	21	88
150	150	147	165	180	6	50.5	18	22	88

## THREADED INTERFACE

Type	C1 : M20 × 1.5	C3 : G1/4	C7 : NPT1/2
Dimensions unit : mm			

**NOTE :** Conventional threads are M20 × 1.5, G1 / 4, G1 / 2, M14 × 1.5, NPT1 / 4, NPT1 / 2. Special thread batches can be customized.

# NOMENCLATURE



FOR EXAMPLE : YBH-10MGC1150

The product is YBH series, measuring range 0 ~10MPa, gauge pressure, thread interface M20 × 1.5, nominal diameter 150mm.

## PRESSURE RANGE SELECTION TABLE

Range code	Pressure type	Measuring range	Overload pressure	Remark
N1K	G	-100kPa ~ 0	130%FS	
NP100K	G	± 100kPa	130%FS	
N4K	G	-100 ~ 160kPa	130%FS	
N5K	G	-100 ~ 250kPa	130%FS	
N6K	G	-100 ~ 400kPa	130%FS	
N7K	G	-100 ~ 600kPa	130%FS	
N8M	G	-0.1 ~ 1MPa	130%FS	
N9M	G	-0.1 ~ 1.6MPa	130%FS	
5KG	G	0 ~ 5kPa	130%FS	
10KG	G	0 ~ 10kPa	130%FS	
16KG	G	0 ~ 16kPa	130%FS	
25KG	G	0 ~ 25kPa	130%FS	
40KG	G	0 ~ 40kPa	130%FS	
60KG	G	0 ~ 60kPa	130%FS	
100KG	G	0 ~ 100kPa	130%FS	
160KG	G	0 ~ 160kPa	130%FS	
250KG	G	0 ~ 250kPa	130%FS	
400KG	G	0 ~ 400kPa	130%FS	
600KG	G	0 ~ 600kPa	130%FS	
1MG	G	0 ~ 1MPa	130%FS	
1.6MS	G	0 ~ 1.6MPa	130%FS	
2.5MS	G	0 ~ 2.5MPa	130%FS	
4MS	G	0 ~ 4MPa	130%FS	
6MS	G	0 ~ 6MPa	130%FS	
10MS	G	0 ~ 10MPa	130%FS	
16MS	G	0 ~ 16MPa	130%FS	
25MS	G	0 ~ 25MPa	130%FS	
40MS	G	0 ~ 40MPa	130%FS	
60MS	G	0 ~ 60MPa	130%FS	
100MS	G	0 ~ 100MPa	130%FS	

**NOTE :** G gauge pressure

The range can be customized

# DISCLAIMER

## Warning

### LIFE OR PROPERTY RISK

- Please ensure that this product has been designed as part of whole system and already considered related risks, make sure the product has the correct ratings and is designed based on the entire system. It must not be used when applications related to serious life or property damage risks.

Failure to follow this instruction can result in death or serious injury.

## Warning

### PERSONAL INJURY

- DO NOT USE these products as safety or emergency stop devices or in any other application where failure of the product could result in personal injury.

Failure to follow this instruction can result in death or serious injury.

## Warning

### MISUSE OF DOCUMENTATION

- The information presented in this product sheet is for reference only. Do not use this document as a product installation guide.
- Complete installation, operation, and maintenance information is provided in the instructions supplied with each product.

Failure to follow this instruction can result in death or serious injury.

## Warranty/Remedy

Banning warrants goods of its manufacture as being free of defective materials and faulty workmanship during the applicable warranty period. Banning's standard product warranty applies unless agreed to otherwise by Banning in writing; please refer to your order acknowledgment or consult your local sales office for specific warranty details. If warranted goods are returned to Banning during the period of coverage, Banning will repair or replace, at its option, without charge those items that Banning, in its sole discretion, finds defective. The foregoing is buyer's sole remedy and is in lieu of all other warranties, expressed or implied, including those of merchantability and fitness for a particular purpose. In no event shall Banning be liable for consequential special, or indirect damages.

While Banning may provide application assistance personally, through our literature and the Banning web site, it is buyer's sole responsibility to determine the suitability of the product in the application.

Specifications may change without notice. The information we supply is believed to be accurate and reliable as of this writing. However, Banning assumes no responsibility for its use.

## SALES & SERVICE

Banning serves its clients through a worldwide network of sales offices, agents and distributors. For application assistance specifications, prices or names with the nearest authorized dealer, please contact your sales specialist or contact us directly:

### Banning ( Nanjing ) Sensing Technology Co., Ltd.

Nanjing, Pukou District, Longtai Road, No. 16  
Building C2, 3rd Floor

TEL : 0086 400 7181 886

TEL : 0086 25 5829 5589



WeChat



Invoice

Official Website : [www.bnsens.com](http://www.bnsens.com)

Service Hotline : 0086 400 7181 886

Official mailbox : [sales@banningsensor.com](mailto:sales@banningsensor.com)

© 2023 Banning (Nanjing) Sensing Technology Co., Ltd.

INTEGRITY  
INTERNATIONAL  
INNOVATION

**BN**sens